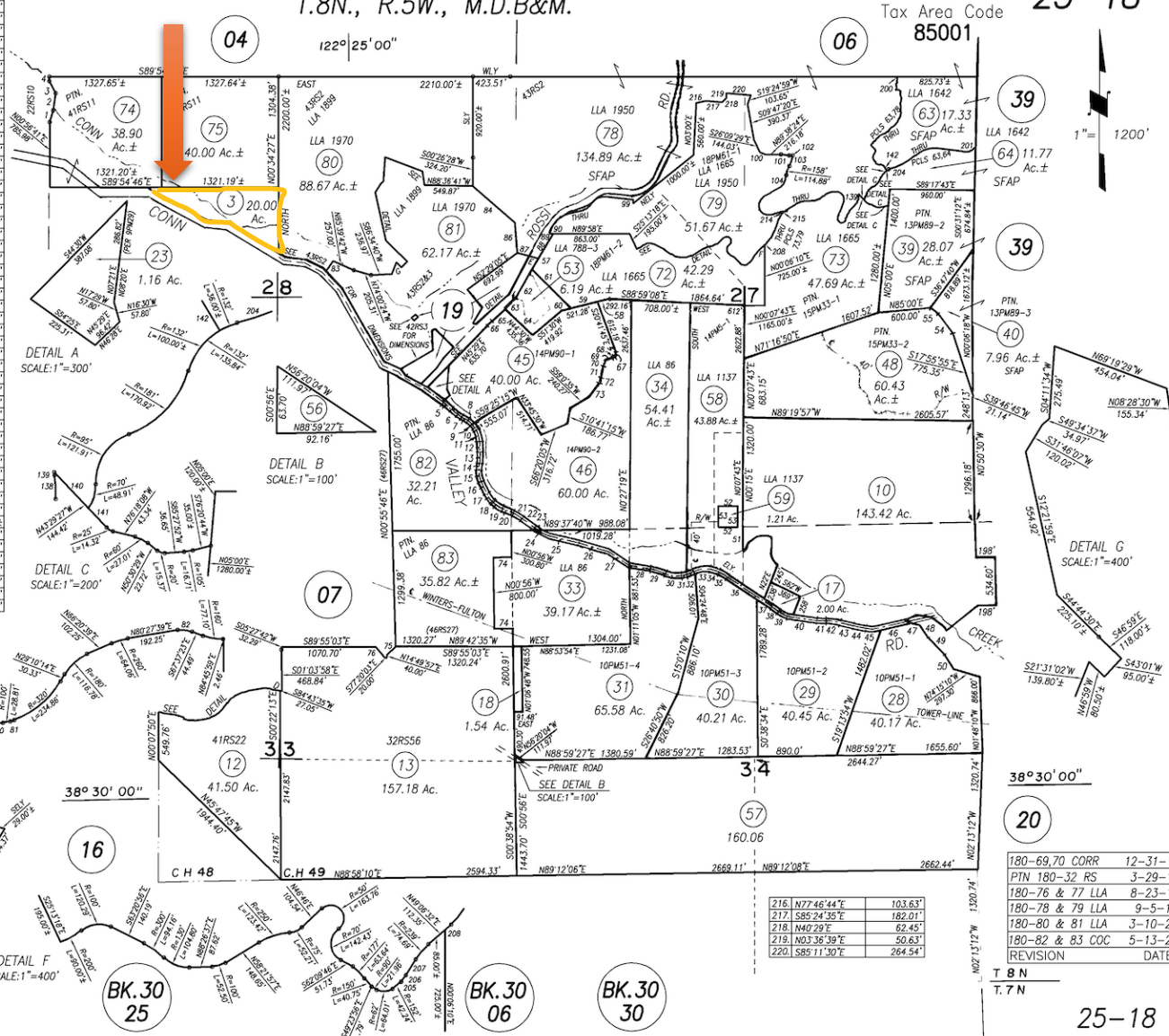


**COUNTY ASSESSOR'S PARCEL MAP**  
T.8N., R.5W., M.D.B&M.

25-18

1.	N16°56'13"E	138.15'	81.	N071°13'21"E	15.44'	162.	R=55'	L=25.33'	
2.	N08°45'38"E	154.92'	82.	R=100'	L=55.70'	163.	R=50'	L=15.10'	
3.	N27°29'33"W	155.28'	83.	S36°25'32"W	276.47'	164.	S48°30'39"W	145.75'	
4.	N00°56'41"E	51.57'	84.	S49°03'44"E	636.09'	165.	R=120'	L=72.96'	
5.	R=812.05'	58	S04°15'15"E	343.50'	166.	R=38'	L=35.91'		
6.	R=530'	59.	L=144.65'	87.	S75°00'00"E	251.57'	167.	R=840'	L=27.53'
7.	N60°14'25"W	65.07'	88.	N31°30'15"E	335.00'	168.	R=58'	L=31.34'	
8.	S24°45'35"W	30.00'	89.	S89°58'58"W	50.00'	169.	S61°50'46"W	41.06'	
9.	R=220'	L=117.25'	90.	N20°00'20"E	59.29'	170.	R=78'	L=56.65'	
10.	N29°42'15"W	7.01'	91.	R=210'	L=99.17'	171.	S20°13'33"W	44.35'	
11.	R=270'	L=121.18'	92.	N47°03'45"E	53.79'	172.	R=84'	L=35.69'	
12.	N03°59'20"W	111.41'	93.	R=220'	L=121.39'	173.	S22°35'36"W	13.99'	
13.	R=730'	L=131.14'	94.	N78°40'35"E	167.11'	174.	R=78'	L=23.11'	
14.	N06°18'15"E	67.66'	95.	R=110'	L=90.23'	175.	R=135'	L=71.44'	
15.	R=300'	L=143.10'	96.	N31°40'40"E	32.89'	176.	S19°52'16"E	21.48'	
16.	N21°01'30"W	135.79'	97.	R=120'	L=192.19'	177.	R=31'	L=26.11'	
17.	R=280'	L=96.33'	98.	S83°32'55"E	317.00'	178.	S32°06'30"W	15.93'	
18.	N42°15'10"W	19.81'	99.	S17'	407.00'	179.	R=42'	L=52.63'	
19.	R=350'	L=138.65'	100.	S56°40'13"E	72.54'	180.	S39°42'32"E	11.34'	
20.	N64°52'W	137.18'	101.	S83°38'17"E	91.36'	181.	R=19'	L=16.99'	
21.	R=600'	L=119.63'	102.	S88°45'29"E	40.25'	182.	R=250'	L=21.48'	
22.	N53°31'35"W	183.34'	103.	R=167'	L=126.87'	183.	S53°35'58"W	4.51'	
23.	R=490'	L=51.37'	104.	R=183'	L=156.25'	184.	R=17'	L=10.71'	
24.	S66°07'45"E	104.14'	105.	R=477'	L=126.76'	185.	S34°42'30"E	14.38'	
25.	S76°32'45"E	375.46'	106.	R=417'	L=96.23'	186.	R=25'	L=13.70'	
26.	S72°48'15"E	360.23'	107.	S54°40'31"W	11.64'	187.	S66°06'01"E	8.05'	
27.	S57°11'22"E	265.13'	108.	R=110'	L=153.90'	188.	R=72'	L=25.19'	
28.	S81°41'49"E	250.55'	109.	R=100'	L=64.75'	189.	R=10'	L=5.75'	
29.	R=440'	L=200.79'	110.	R=90'	L=68.63'	190.	S03°44'36"E	10.71'	
30.	R=353.71'	L=100.79'	111.	R=142'	L=81.63'	191.	R=5'	L=4.49'	
31.	N82°22'16"E	65.25'	112.	N76°49'34"E	25.37'	192.	S47°43'04"W	3.88'	
32.	R=262.70'	L=95.77'	113.	R=1400'	L=102.45'	193.	R=7'	L=9.98'	
33.	R=223.38'	L=182.60'	114.	N77°37'59"E	17.61'	194.	R=15'	L=9.93'	
34.	S71°40'50"E	113.14'	115.	R=143'	L=24.88'	195.	R=21'	L=12.44'	
35.	R=359.38'	L=190.52'	116.	R=598'	L=21.38'	196.	S13°35'28"E	2.55'	
36.	S55°48'50"E	396.80'	117.	R=201'	L=45.97'	197.	R=33'	L=17.14'	
37.	S55°48'50"E	194.00'	118.	R=310'	L=67.44'	198.	R=7'	L=6.79'	
38.	R=287.83'	L=72.80'	119.	R=293'	L=170.94'	199.	R=23'	L=22.68'	
39.	R=223.36'	L=166.40'	120.	R=180'	L=164.80'	200.	R=30'	L=12.44'	
40.	S82°10'40"E	335.24'	121.	R=150'	L=86.32'	201.	R=25'	L=18.01'	
41.	R=616.82'	L=191.62'	122.	N76°03'43"E	29.86'	202.	N87°26'08"W	2.82'	
42.	R=350.86'	L=144.31'	123.	R=133'	L=45.96'	203.	S4°34'34"E	1.91'	
43.	R=884.12'	L=161.26'	124.	R=86'	L=142.25'	204.	R=644'	L=308.62'	
44.	S79°19'43"E	146.88'	125.	S20°06'37"W	61.08'	205.	N41°32'35"E	62'	
45.	R=360.10'	L=158.03'	126.	R=774'	L=61.71'	206.	R=170'	L=30.38'	
46.	N75°31'40"E	380.02'	127.	R=147'	L=34.74'	207.	N31°12'13"E	70.00'	
47.	N72°24'55"E	91.47'	128.	N52°04'56"W	26.37'	208.	S49°06'32"W	30.09'	
48.	N34°10'10"W	176.00'	129.	R=47'	L=86.39'	209.	R=239'	L=27.11'	
49.	N45°35'10"W	264.40'	130.	R=58'	L=23.35'	210.	R=432'	L=88.91'	
50.	N32°54'10"W	200.40'	131.	R=47'	L=57.89'	211.	S18°49'55"W	83.31'	
51.	N00°07'52"E	261.91'	132.	R=142'	L=22.43'	212.	S17°57'03"W	59.16'	
52.	S89°57'17"W	220.00'	133.	R=80'	L=41.38'	213.	R=200'	L=50.28'	
53.	N05°07'43"E	240.00'	134.	R=248'	L=45.78'	214.	R=143'	L=58.69'	
54.	S38°05'05"E	217.05'	135.	N41°17'36"E	47.35'	215.	R=143'	L=83.57'	
55.	S53°43'15"E	104.11'	136.	R=1500'	L=86.76'				
56.	S00°06'10"W	31.94'	137.	R=71'	L=47.54'				
57.	N31°26'08"E	55.84'	138.	R=152'	L=45.18'				
58.	N73°02'50"E	105.99'	139.	R=70'	L=54.46'				
59.	S73°04'08"W	401.28'	140.	S43°29'27"E	94.58'				
60.	S73°04'06"W	120.00'	141.	S43°29'27"E	50.00'				
61.	S44°19'03"E	637.33'	142.	S30°50'17"E	65.00'				
62.	N31°26'08"E	376.19'	143.	R=25'	L=30.66'				
63.	N45°29'E	161.11'	144.	N78°53'38"E	9.87'				
64.	N44°30'W	446.84'	145.	R=45'	L=12.34'				
65.	N45°33'30"E	209.28'	146.	S85°23'32"E	14.09'				
66.	R=203'	L=66.80'	147.	R=15'	L=10.21'				
67.	S04°39'55"E	52.94'	148.	S46°23'35"E	22.36'				
68.	S85°20'05"W	38.80'	149.	R=80'	L=21.52'				
69.	S79°40'45"W	121.46'	150.	S30°58'47"E	24.98'				
70.	S11°43'45"W	59.72'	151.	R=25'	L=12.08'				
71.	S12°24'25"W	132.26'	152.	S03°17'29"E	22.46'				
72.	S09°29'50"W	55.85'	153.	R=25'	L=16.09'				
73.	S37°43'30"W	195.67'	154.	S33°34'46"W	41.99'				
74.	N89°04'E	200.00'	155.	R=25'	L=36.00'				
75.	N46°25'23"E	128.04'	156.	S48°55'07"E	55.33'				
76.	S39°50'03"E	160.00'	157.	R=15'	L=24.31'				
77.	S75°16'28"E	5.67'	158.	R=60'	L=25.20'				
78.	R=23.59'	L=2.23'	159.	R=38'	L=26.09'				
79.	N08°22'44"E	17.11'	160.	S28°39'21"W	15.01'				
80.	N87°43'43"E	21.38'	161.	R=31'	L=15.28'				

NOTE: This Map Was Prepared For Assessment Purposes Only, No Liability Is Assumed For The Accuracy Of The Data Delineated Hereon.



180-69,70 CORR	12-31-15
PTN 180-32 RS	3-29-17
180-76 & 77 LLA	8-23-17
180-78 & 79 LLA	9-5-19
180-80 & 81 LLA	3-10-20
180-82 & 83 COC	5-13-20
REVISION	DATE

T 8 N  
T 7 N